



Source: United Nations. 2020. Map of the world [online]. [Cited July 2022]

Cropland is fundamental to food security. Cropland information is required to monitor food security indicators and provide information on access to water, cropping intensities etc. Cropland for Sindh province are obtained from the national land cover of Pakistan (2021) in context of GEF-8 projects. The main aim of the GEF-8 project is to transform rice fields to improve the region's food security.

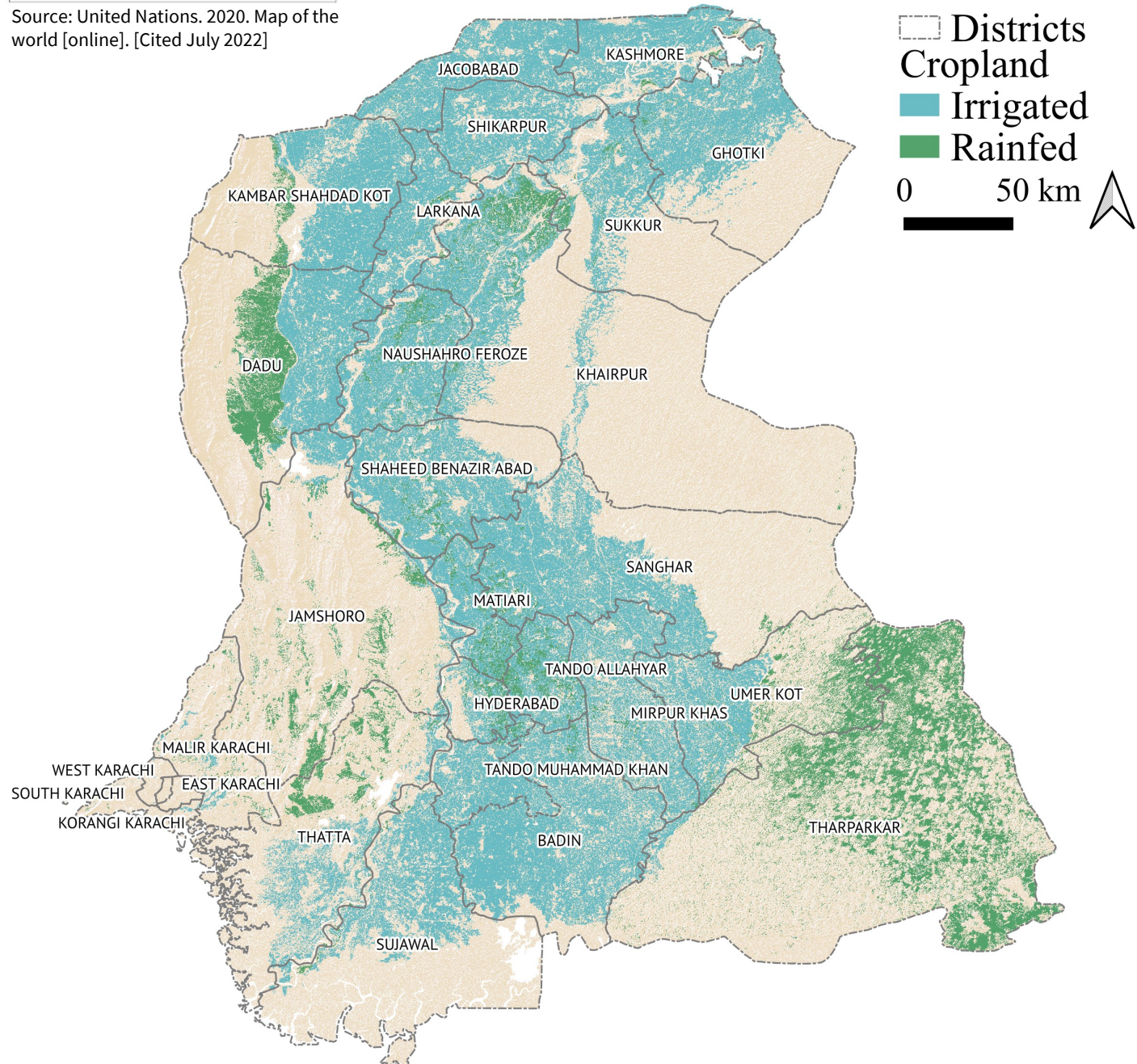


Figure 1: Irrigated and rainfed cropland in Sindh, Pakistan¹

**Table 1: Extent of rainfed and irrigated cropland area (in '000 ha)
in Sindh, Pakistan**

District	Irrigated	Rainfed	Total cropland	Total land area
Tharparkar	16.7	574.5	591.1	1 968.3
Badin	431.3	5.8	437.1	657.5
Sanghar	347.9	17.6	365.5	1 015.8
Dadu	203.5	139.8	343.3	801.8
Khairpur	237.5	56.6	294.1	1 600.6
Kambar Shahdad Kot	254.4	20.6	275.0	559.7
Shaheed Benazir Abad	248.1	16.9	265.0	458.2
Umer Kot	161.6	97.8	259.5	549.0
Ghotki	250.5	5.0	255.6	636.7
Naushahro Feroze	197.0	21.8	218.8	303.7
Mirpur Khas	206.1	11.1	217.2	346.3
Jacobabad	203.2	0.5	203.7	269.1
Sujawal	199.0	4.1	203.0	868.7
Shikarpur	172.8	1.3	174.1	255.2
Kashmore	165.0	2.6	167.6	261.5
Thatta	113.2	54.2	167.4	763.0
Sukkur	132.5	11.1	143.6	517.9
Jamshoro	60.6	83.0	143.6	1 123.1
Larkana	127.7	4.2	131.9	192.1
Tando Muhammad Khan	117.4	3.8	121.3	167.7
Tando Allahyar	87.3	32.2	119.5	154.4
Matiali	91.7	21.0	112.6	145.8
Hyderabad	39.9	12.6	52.5	101.9
Malir Karachi	11.1	9.2	20.3	270.9
Korangi Karachi	1.3	0.0	1.3	12.2
South Karachi	0.6	0.4	0.9	50.8
West Karachi	0.7	0.0	0.7	24.2
East Karachi	0.1	0.0	0.1	20.3
Central Karachi	0.0	0.0	0.0	6.5
Total	4 078.7	1 207.6	5 286.3	14 102.8

Prepared by Fatima Mushtaq, Shrijwal Adhikari, Mehwish Ali, Amit Ghosh, Gautam Dadhich, Rashed Jalal, Beau Damen and Matieu Henry for the GEF-8 projects. Food and Agriculture Organization of United Nations, Rome, Italy.

¹ [GADM](#)

The boundaries and names shown, and the designations used on these map(s) do not express any opinion whatsoever on the part of FAO concerning the legal status of any country, territory, city or area or of its authorities, or concerning the delimitation of its frontiers and boundaries. Dashed lines on maps represent approximate border lines for which there may not yet be full agreement.